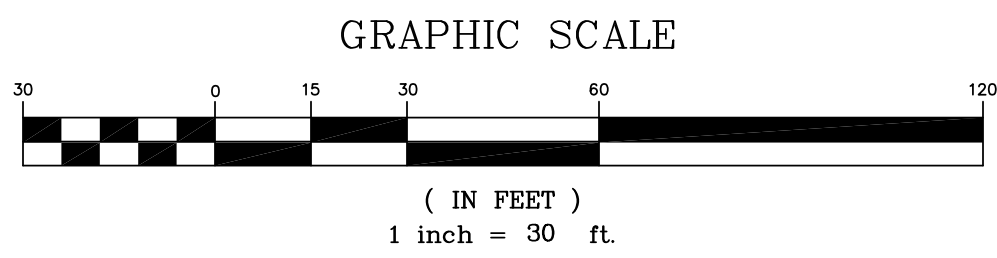
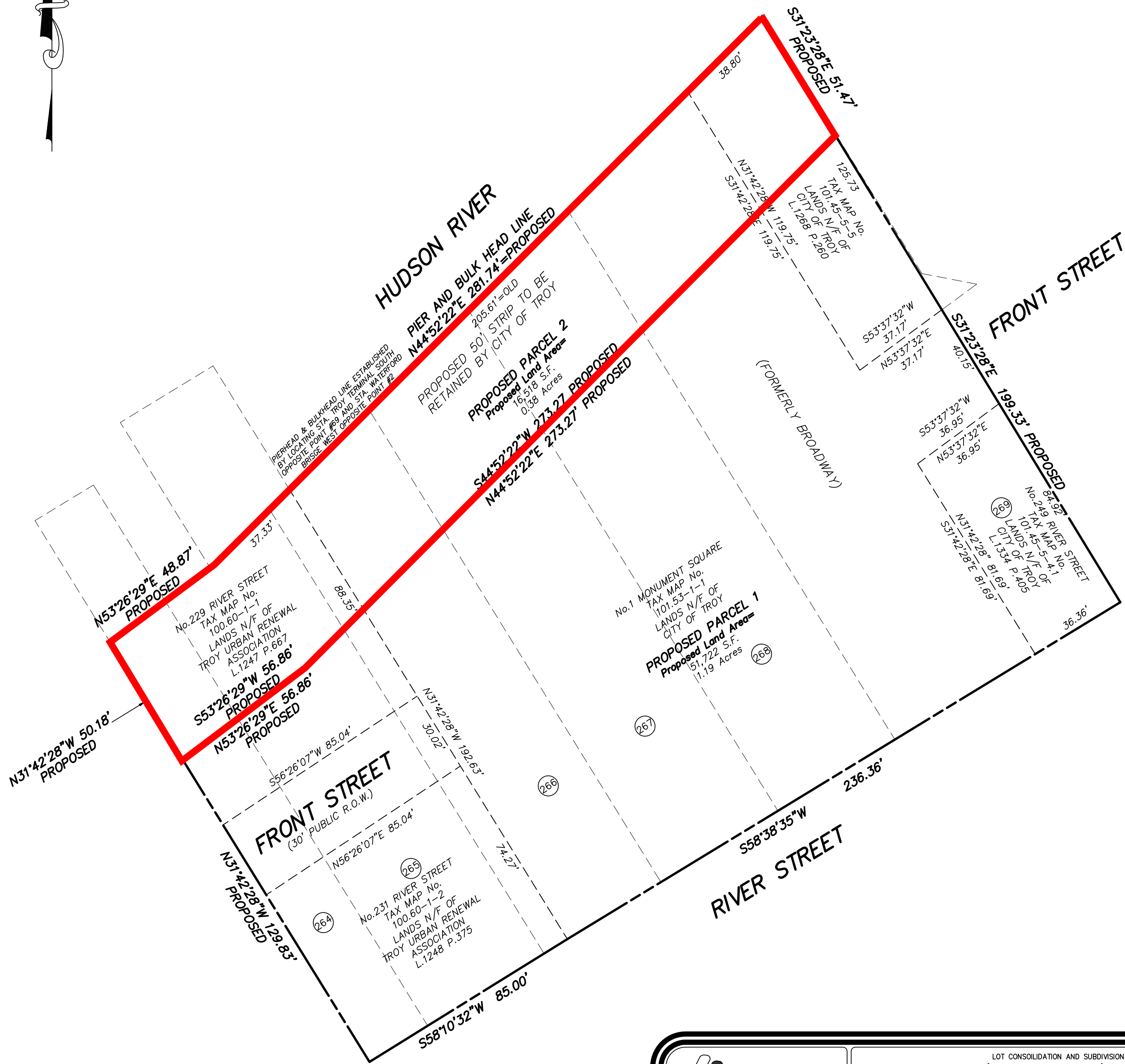
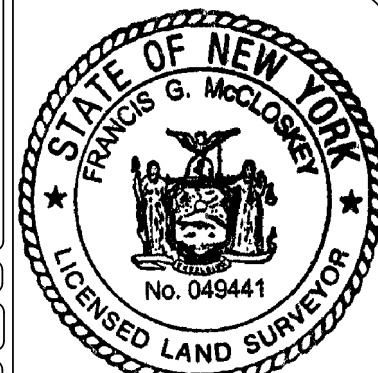


VICINITY MAP  
MAP NOT TO SCALE



**HERSHBERG & HERSHBERG**  
Consulting Engineers  
and Land Surveyors  
18 Locust Street  
Albany, New York 12203

LOT CONSOLIDATION AND SUBDIVISION OF:  
TAX MAP No.'s 101.45-5-4.1 (249 RIVER STREET),  
101.45-5-5 (NO RECORDED ADDRESS),  
101.53-1-1 (1 MONUMENT SQUARE),  
100.60-1-1 (229 RIVER STREET &  
100.60-1-2 (231 RIVER STREET)  
CITY OF TROY, COUNTY OF RENSSELAER, STATE OF NEW YORK



ALTERATION OF THIS DOCUMENT, EXCEPT BY A LICENSED PROFESSIONAL ENGINEER OR LAND SURVEYOR, IS ILLEGAL.  
REVISIONS:  
DATE: 10/23/11 SCALE: 1"=30' BY: AVC CHK: GRT MAP No.: 110250-R